



## Driver Installation Guide



### System requirements

The minimum hardware requirements for installation and operation of the software are:

- IBM-compatible PC
- Windows XP (32-bit) Service pack 2 or more recent
- Free USB port

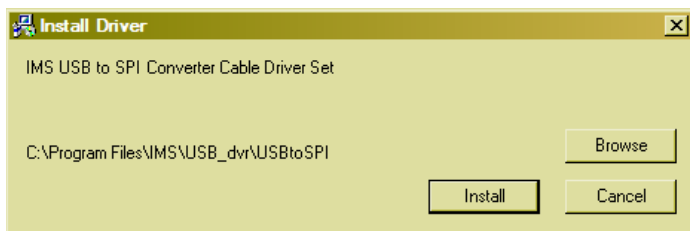
**NOTICE: Users of 64-bit Windows operating systems!**

The MD-CC30x-001 has an issue operating under 64-bit Windows systems. A workaround shown to allow these units to operate properly in the 64-bit environments.

The workaround instructions and downloads are located on the internet at [http://www.imshome.com/downloads/cable\\_drivers.html#3](http://www.imshome.com/downloads/cable_drivers.html#3). **This must be performed prior to installing the communication converter drivers.**

### Prior to plugging the cable into your system USB port

- ▶ Download the drivers for the SPI Communications Interface from the internet at: [http://www.imshome.com/downloads/cable\\_drivers.html](http://www.imshome.com/downloads/cable_drivers.html) to a location on your hard drive.
- ▶ Extract the zip file to a folder on your PC's hard drive.
- ▶ **IMPORTANT!** Double click the file "PreInstaller.exe" to run.
- ▶ Click the button labeled "Install".



- ◀ A dialog indicating "Installation successful" should appear. At this time you may plug the cable into your PC's USB port to complete the installation process.

### Installing the drivers

The driver installation process will install two sets of drivers onto your PC.

1. Drivers for the communications converter.
2. Drivers for a virtual communication port.

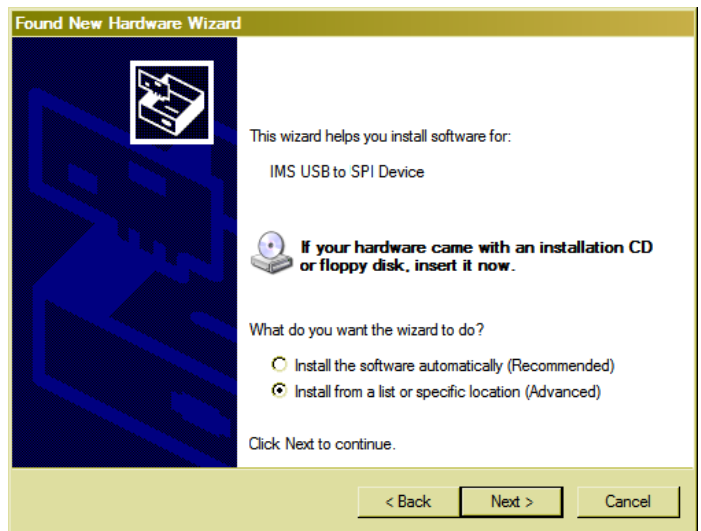
Therefore the Hardware Update wizard will run twice during the installation process.

The full installation procedure will be a two-part process: Installing the Cable/VCP drivers and Determining the Virtual COM Port used.

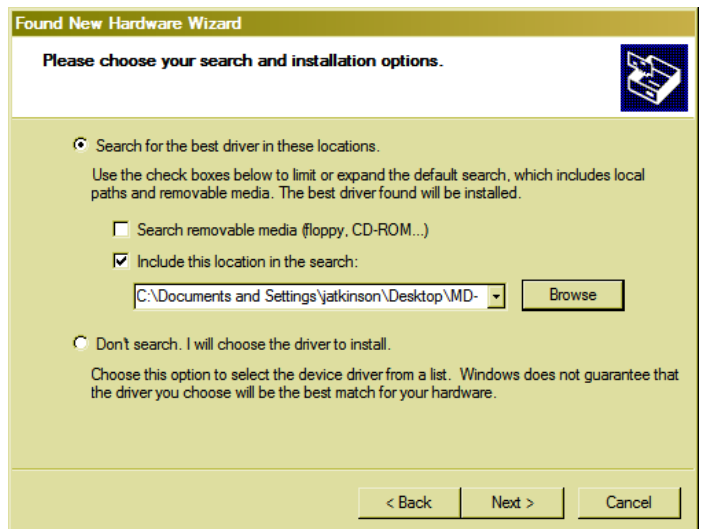
- ▶ Plug the MD-CC30x-001 into the USB port of your PC.
- ◀ The Hardware Update wizard will open.
- ▶ Select "No, not this time" on the radio buttons in answer to the query "Can Windows Connect to Windows Update to search for software?" Click "Next"



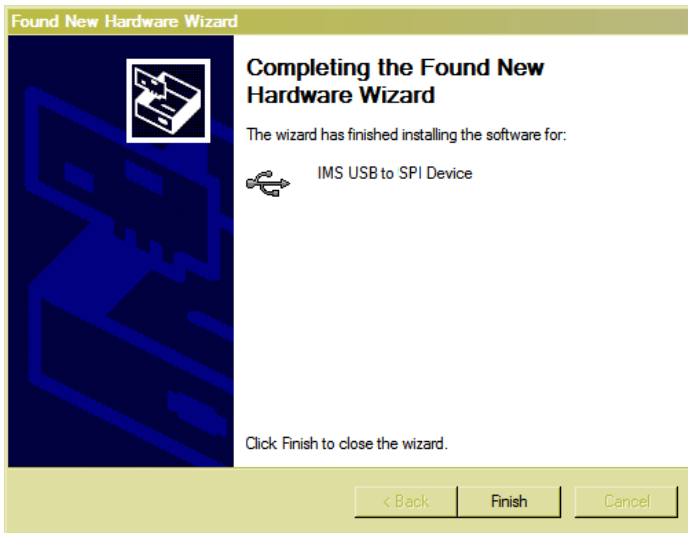
- ▶ Select "Install from a list or specific location (Advanced)" on the radio buttons in answer to the query "What do you want the wizard to do?" Click "Next"



- ▶ Select "Search for the best driver in these locations."
  - (a) Check "Include this location in the search."
  - (b) Browse to the hard drive location of your extracted drivers.
  - (c) Click Next



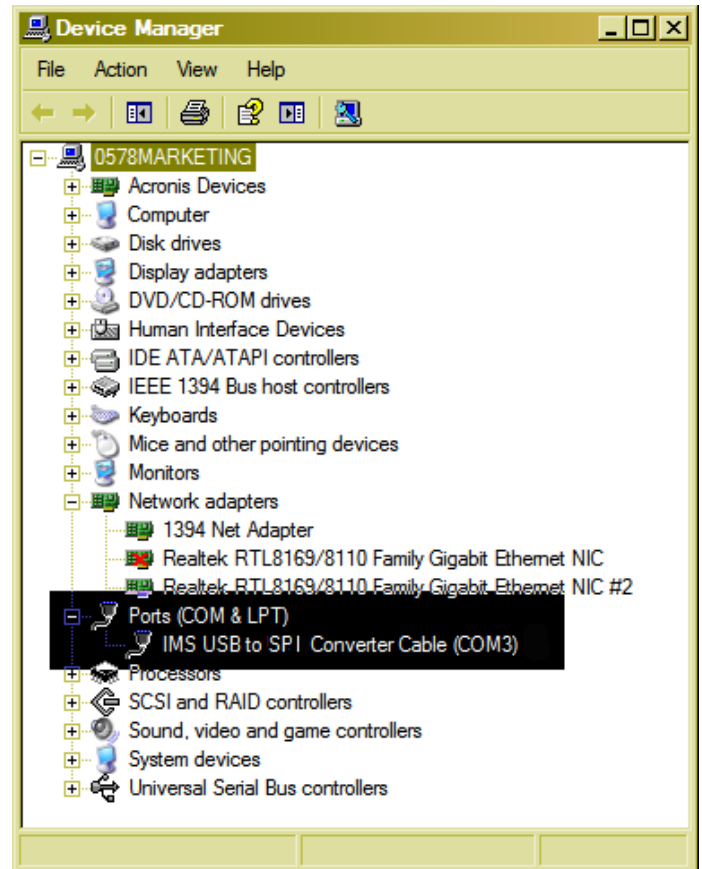
- ◁ The drivers will begin to copy.
- ▶ When the copy process completes, click the "Finish" button to complete the installation.



- ▶ After a few seconds, the Found New Hardware wizard will reopen. This is to install the Virtual COM Port (VCP) drivers. Repeat the steps as in the procedure above to complete the installation.

### Verify the installation

- ◁ When the installation process is complete, it can be verified by browsing to your PC's Device Manager in the system properties.
- ◁ Under the heading "Ports (COM & LPT)" the IMS USB to SPI Converter Cable (COMx) will be visible.



- ◁ The cable is now ready for use.